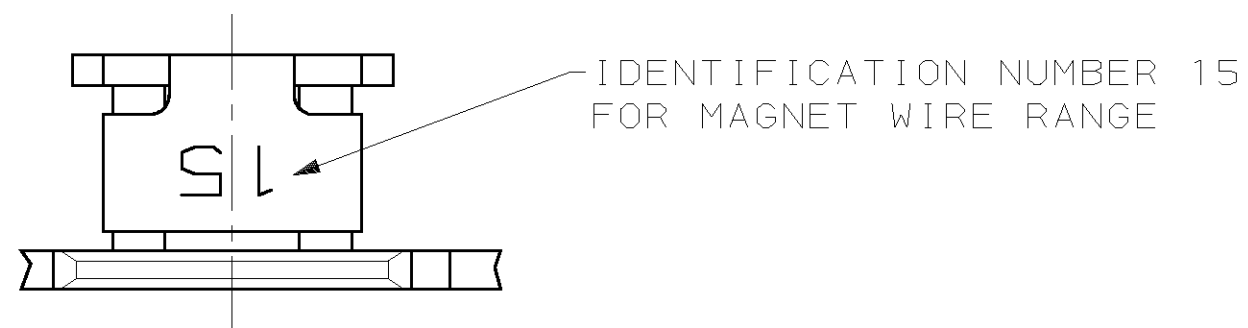
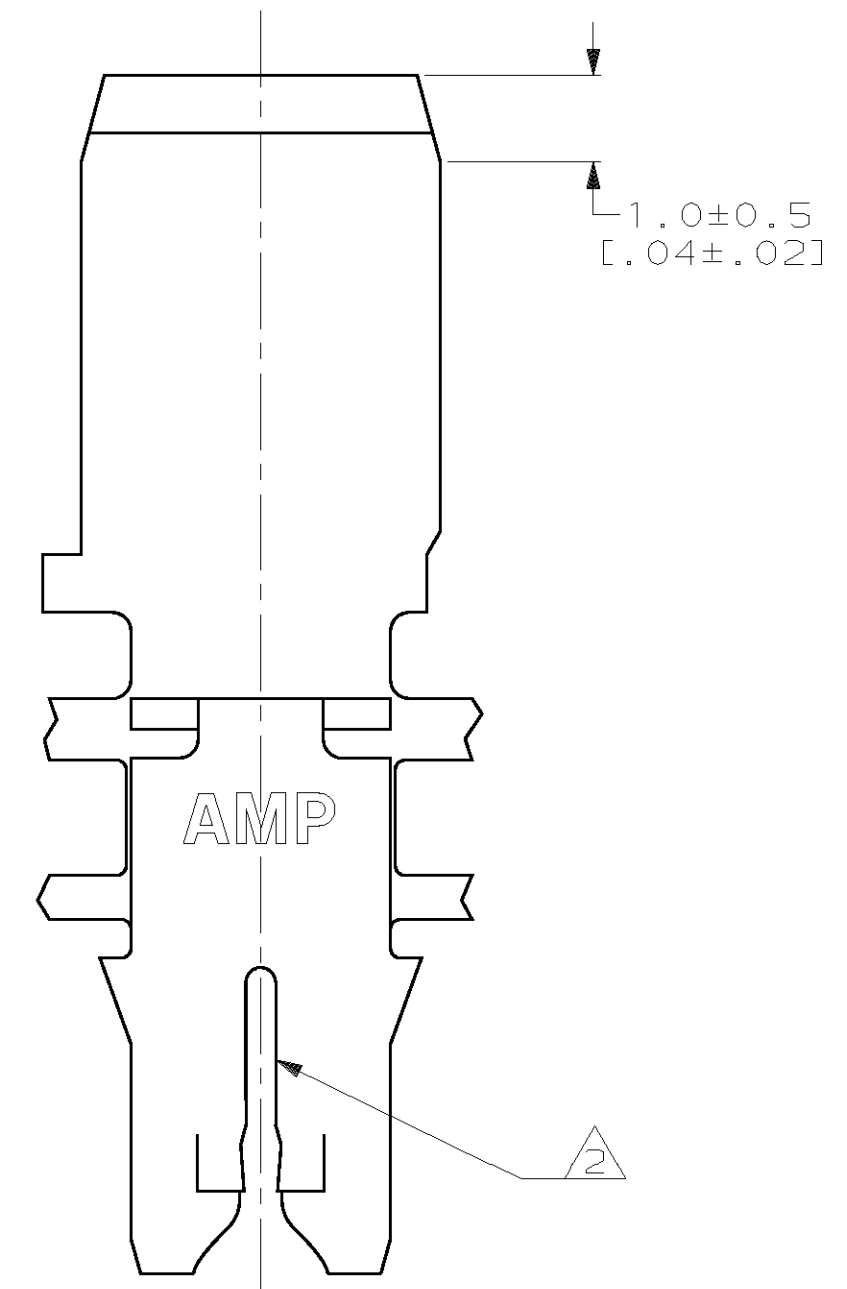
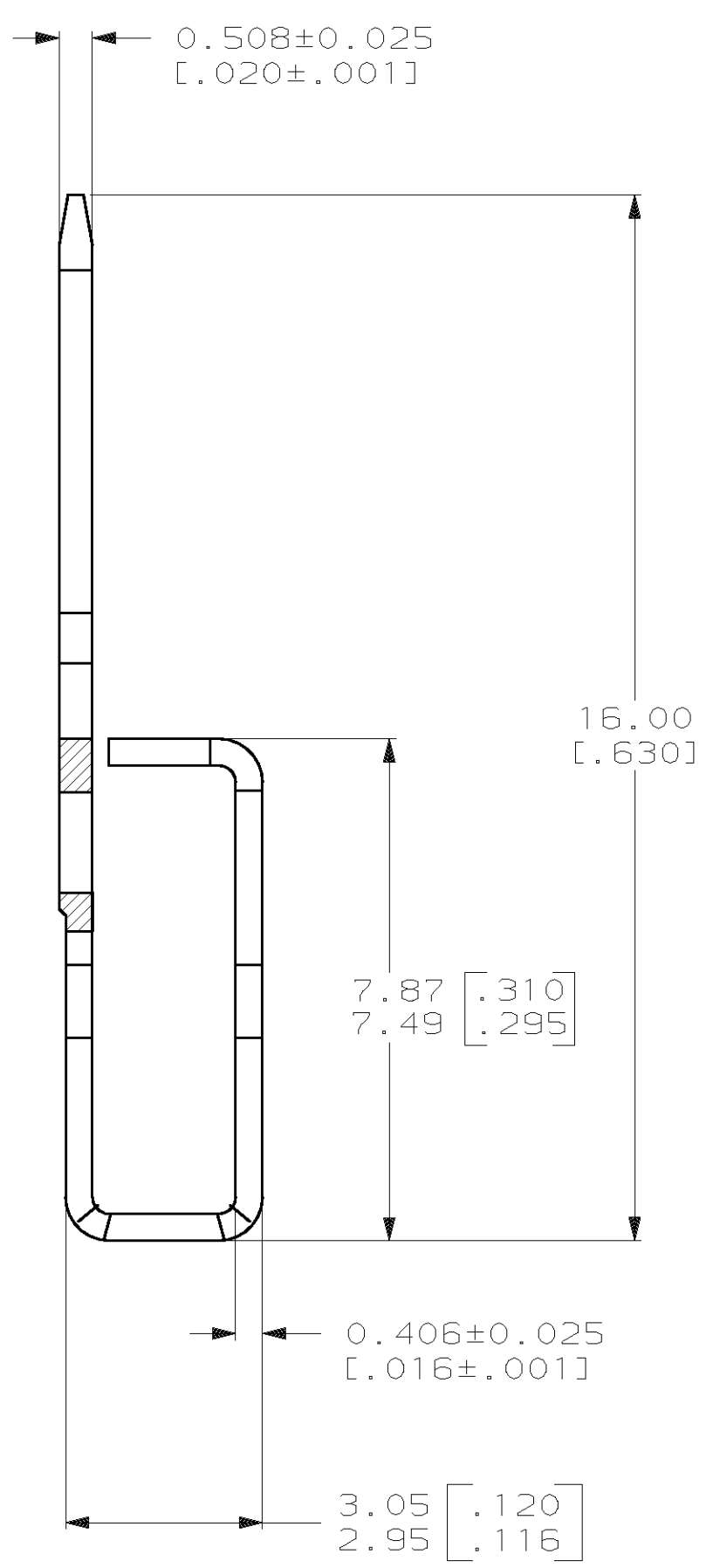
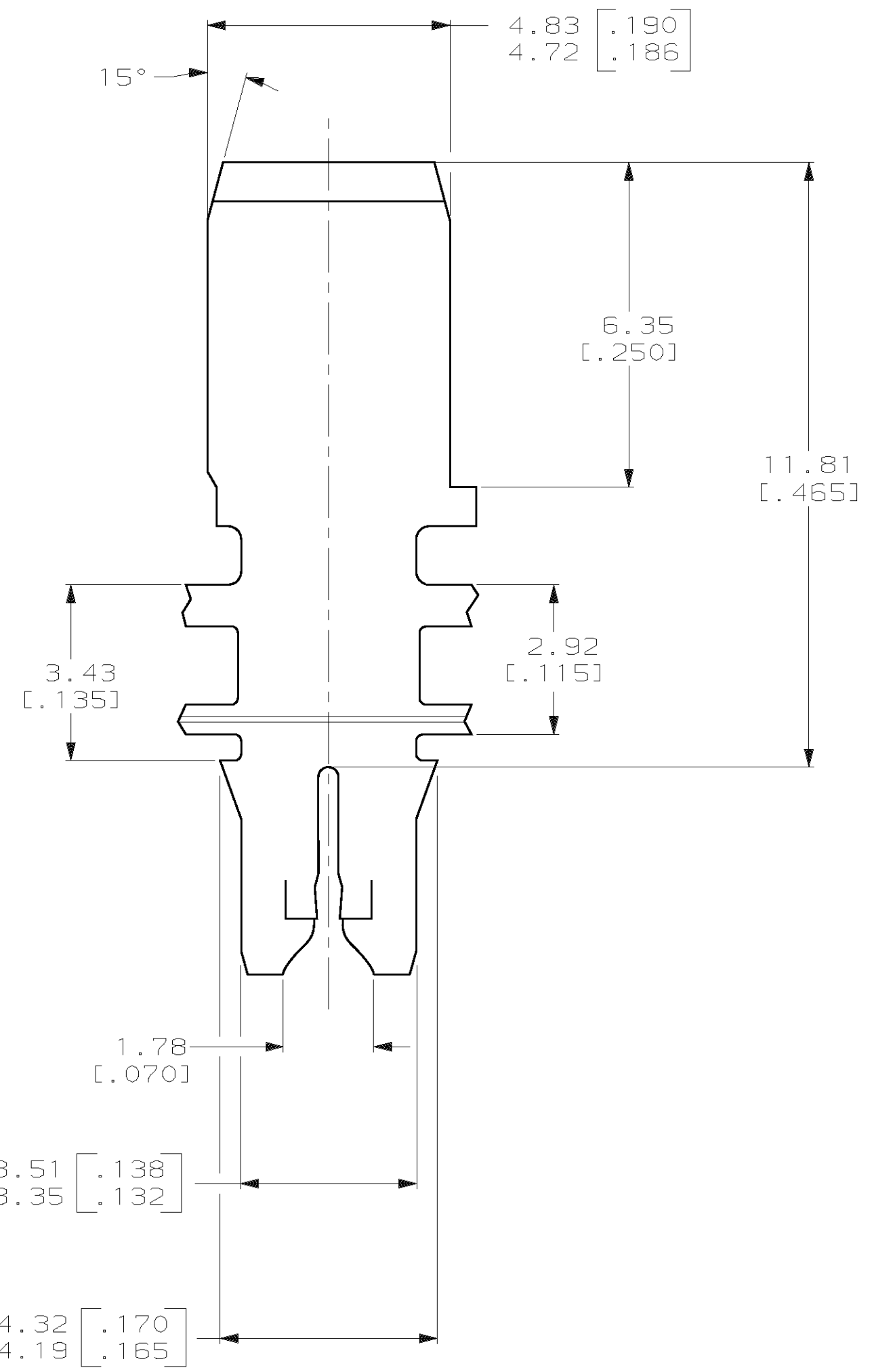


THIS DRAWING IS UNPUBLISHED. RELEASED FOR PUBLICATION, 19 .
 © COPYRIGHT 19 BY AMP INCORPORATED. ALL INTERNATIONAL RIGHTS RESERVED.

| LOC | | DIST | | ZONE | | LTR | | REVISIONS | | DATE | APPD |
|-----|----|------|---|------|--|-----|--|-----------|---------------------------|---------|-------|
| AF | 50 | P | F | | | | | D | ADDED -2 PER 0G3A-0354-00 | 14JUN00 | MF/KR |



- 1 CONTINUOUS STRIP ON REELS WITH TERMINALS LOCATED ON 5.59±0.08 [.220±.003] CENTERS.
- 2 SLOT TERMINATES A SINGLE MAGNET WIRE ONLY. COPPER RANGE: 0.57mm [#23] AWG.
- 3 AFTER INSERTION INTO PLASTIC HOLDER TAB PORTION MUST BE BENT OVER 45° TO 90° OR POTTED-IN TO PREVENT PULL-OUT WHEN MATING RECEPTACLE IS DISCONNECTED.
- 4 SPECIAL LABELING.
- 5 PRELIMINARY - NOT FOR PRODUCTION.



| | | |
|---------|---|---------|
| 4 | 5 | 63776-2 |
| | | 63776-1 |
| PART NO | | |

| | | | |
|---|-------------------------------------|---|-----------------------|
| DO NOT SCALE PRINT. UNLESS SPECIFIED DIMENSIONS IN mm [INCHES] TOLERANCES ON: 2 PLC DEC ± 0.25 [.010] 3 PLC DEC ± - ANGLES ± - | DR 04/FEB/94 MICHAEL S. FEHER | AMP Incorporated Harrisburg, PA 17105-3608 | |
| | CHK 09/FEB/94 PHILLIP M. FORTNEY | | |
| MATERIAL 4M PRE-MILLED BRASS | APPD 09/FEB/94 KURT A. RANDOLPH | NAME TERMINAL, TAB, 4.75 [.187] FASTON™, MAG-MATE™ | |
| FINISH 0.002032 [.000080] MIN TIN PER MIL-T-10727 | APPD 09/FEB/94 TERRY L. SHUTTER | PRODUCT SPEC 108-2012 | DRAWING NO C=63776 |
| | APPLICATION SPEC 114-2046 | SIZE C | CAGE CODE 00779 |
| | WEIGHT - | SCALE 10:1 | SHEET 1 OF 1 |

THIS DRAWING IS A CONTROLLED DOCUMENT FOR AMP INCORPORATED. IT IS SUBJECT TO CHANGE AND THE CONTROLLING ENGINEERING ORGANIZATION SHOULD BE CONTACTED FOR THE LATEST REVISION.